

Importing and flashing pre-configured profiles.

Presented by
Control Solutions
(503) 410-5996
vfcdataloggers.com



Importing and flashing pre-configured profiles.

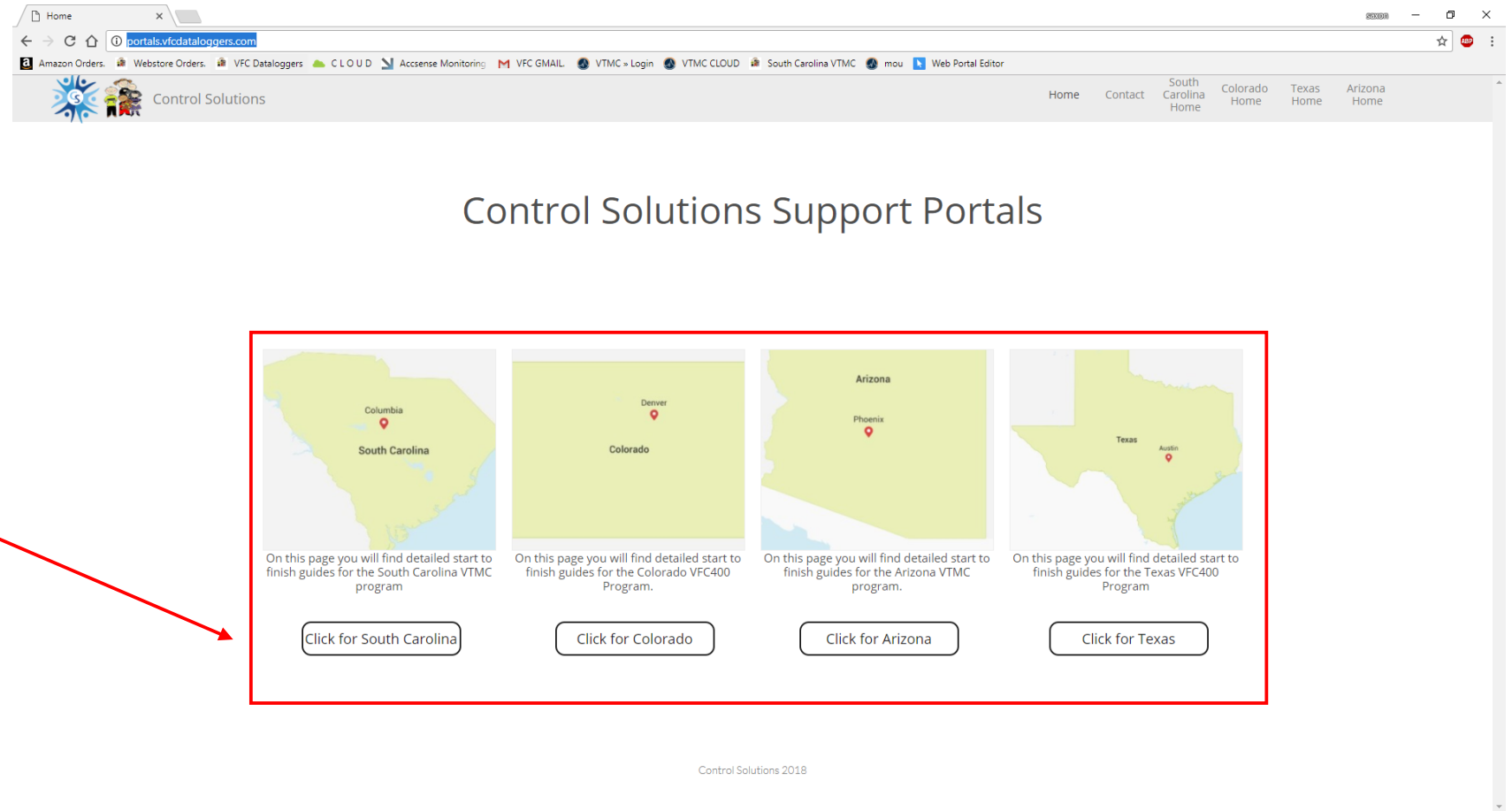
- This guide assumes you have previously installed our Control Solutions VTMC software for the VFC400. Please use the VFC400 instruction page if you need assistance installing it.
- These profiles are pre-configured! What this means for you: You will not be required to enter the configuration parameters manually.
- Using and flashing profiles is only necessary If:
 - If you acquire or purchase a new device.
 - You've had an incident that requires the data logger to have a new profile flashed onto it.

Importing and flashing pre-configured profiles.

Step 1. Open your internet browser. We use Google chrome but any will work.

Step 2. Navigate to portals.vfcdataloggers.com







Step 3. Select your state.



Importing and flashing pre-configured profiles.

This page is custom tailored for you by us at control solutions. The information on this page will teach you how to master the VFC400 and vaccine temperature monitoring cloud.

- From your state homepage click on State Data Logger materials.

 <p>VFC400 Software Download</p> <p>Download the Option that lists VTMC</p>	 <p>VFC400 Instructions</p> <p>All information needed to install, configure and use your new digital data logger (DDL).</p>	 <p>VTMC Instructions</p> <p>Tutorials in .PDF format to help you master Vaccine Temperature Monitoring Cloud at your own pace.</p>
 <p>State material</p> <p>Here you can find profiles that utilize our software and will configure your loggers using the settings recommended by the</p>	 <p>Webinar Videos</p> <p>Here you will find recordings of the Webinar training sessions hosted by control solutions.</p>	 <p>Re-Calibration Process</p> <p>Click here for a complete breakdown of our fast and friendly re-calibration process.</p>

Click State materials.

Importing and flashing pre-configured profiles.

State Materials

- To download a pre-configured profile click the button with the respective cooling unit of your choice or both!

Below you can download the profiles for your VFC400 with the recommended settings from the Arizona Department of Health Services.

Please be aware your computer will not be able to open the configuration profiles unless you have our Control Solutions VTCM software installed. Software downloads can be found [here](#)

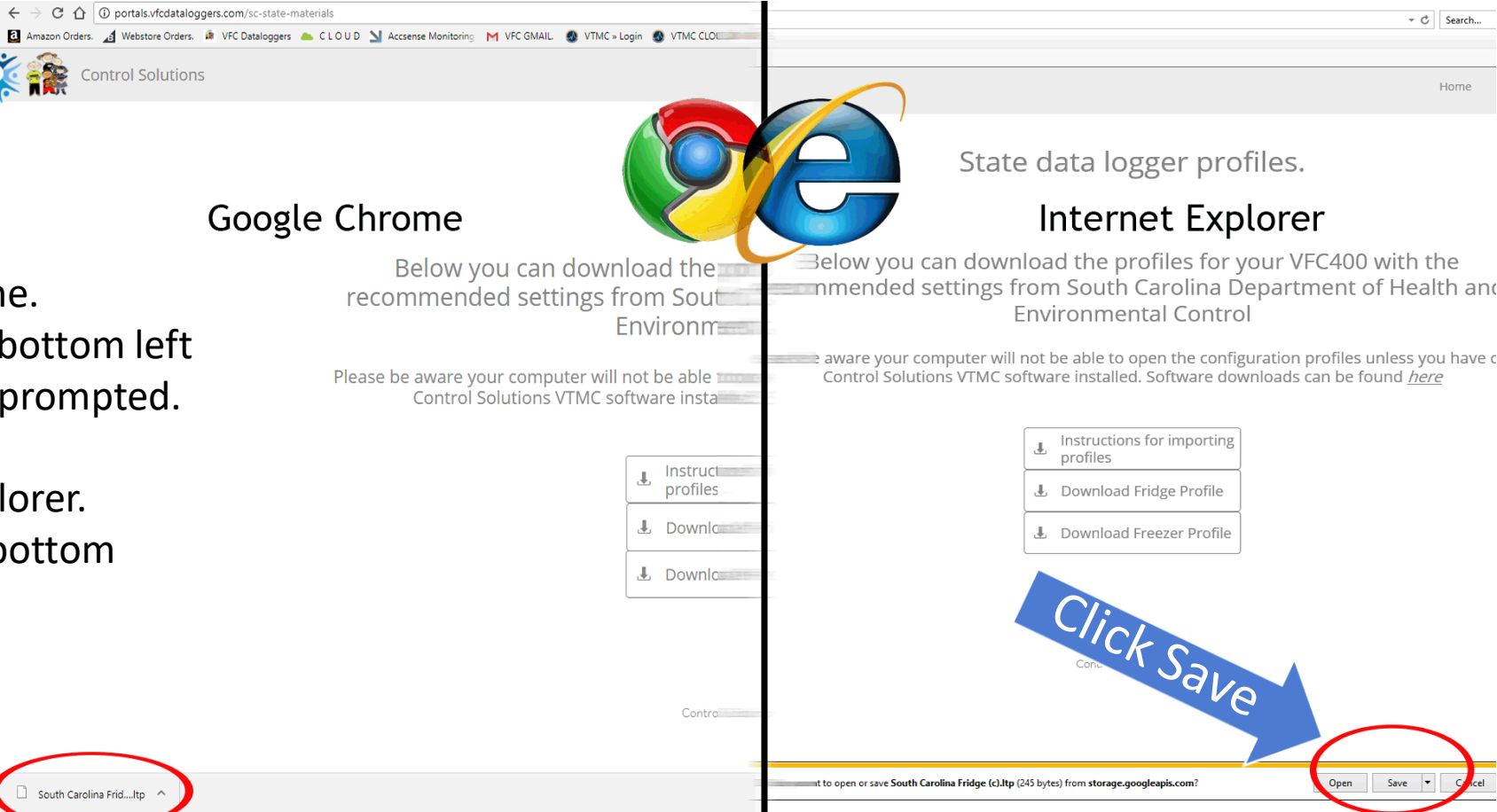
[Instructions for importing profiles](#) [Download fridge Profile](#) [Download Freezer Profile](#)

Click Download

We have also put up pictures of the configurations for quick reference

The image shows two side-by-side screenshots of the 'LogTag Configure' software interface. The left window is titled 'FRIDGE' and the right is titled 'FREEZER'. Both windows show a 'LogTag battery: OK' status and a 'Push button start' dropdown. The configuration options include: 'Enable pre-start logging' (checkbox), 'Record readings continuously, overwrite oldest when memory full' (checkbox), 'Record readings so that:' (radio button), 'Readings recorded will span at least' (365 days), 'Number of readings to record' (15,905), 'Record a reading every' (15 minutes), and 'Begin recording after a delay of' (0 minutes). Alarm settings include 'Trigger alarm when readings above/equal' (46 for fridge, 5 for freezer), 'After' (2 consecutive), 'violation readings (30 Minutes)', and 'Audible alarm' (checkbox). There are also options for 'Configure requires a password' and 'Download requires a password'. Navigation buttons at the bottom include '< Back', 'Next >', 'Close', and 'Help'.

Importing and flashing pre-configured profiles.



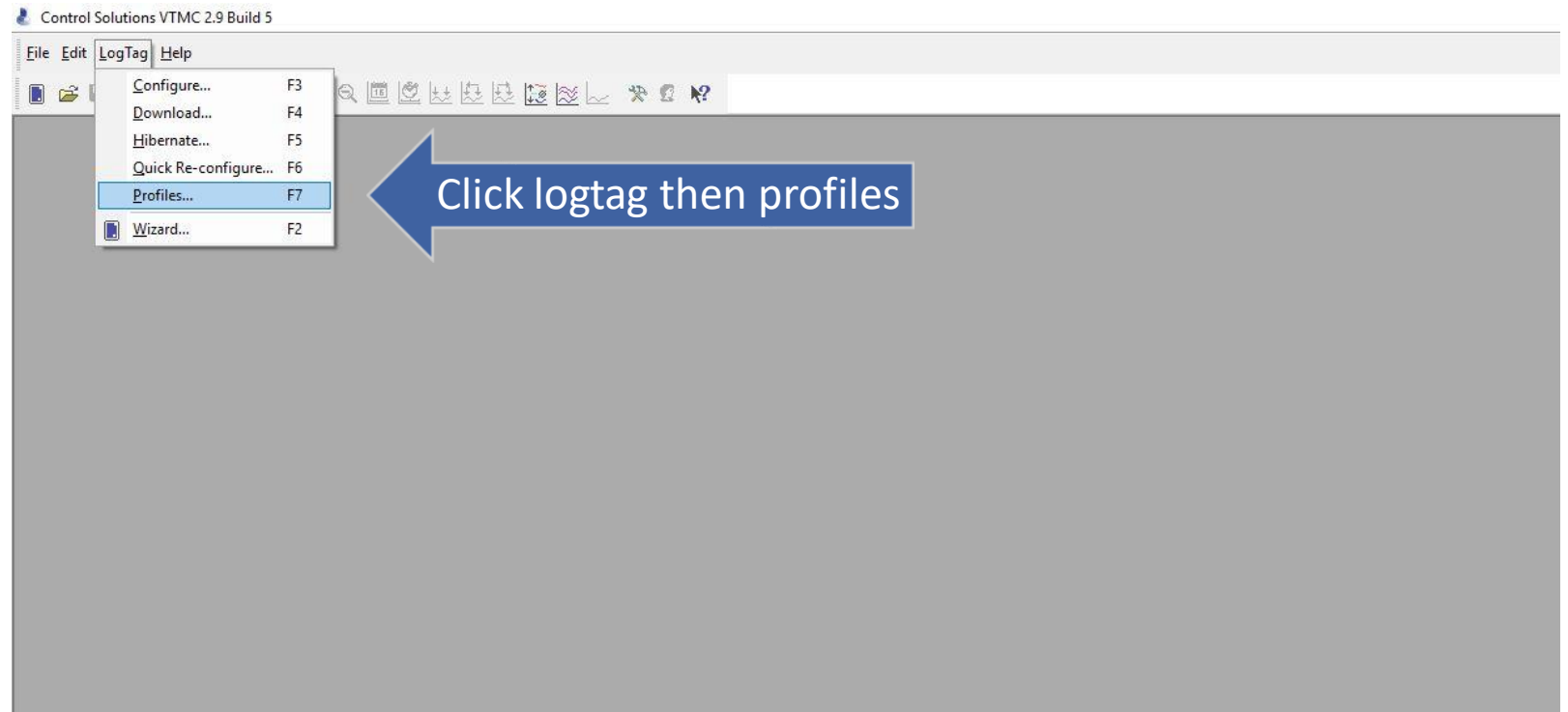
•Left: Google chrome.
Download status is bottom left corner. Click save if prompted.

•Right: Internet explorer.
Download prompt bottom center. Click save.

Importing and flashing pre-configured profiles.

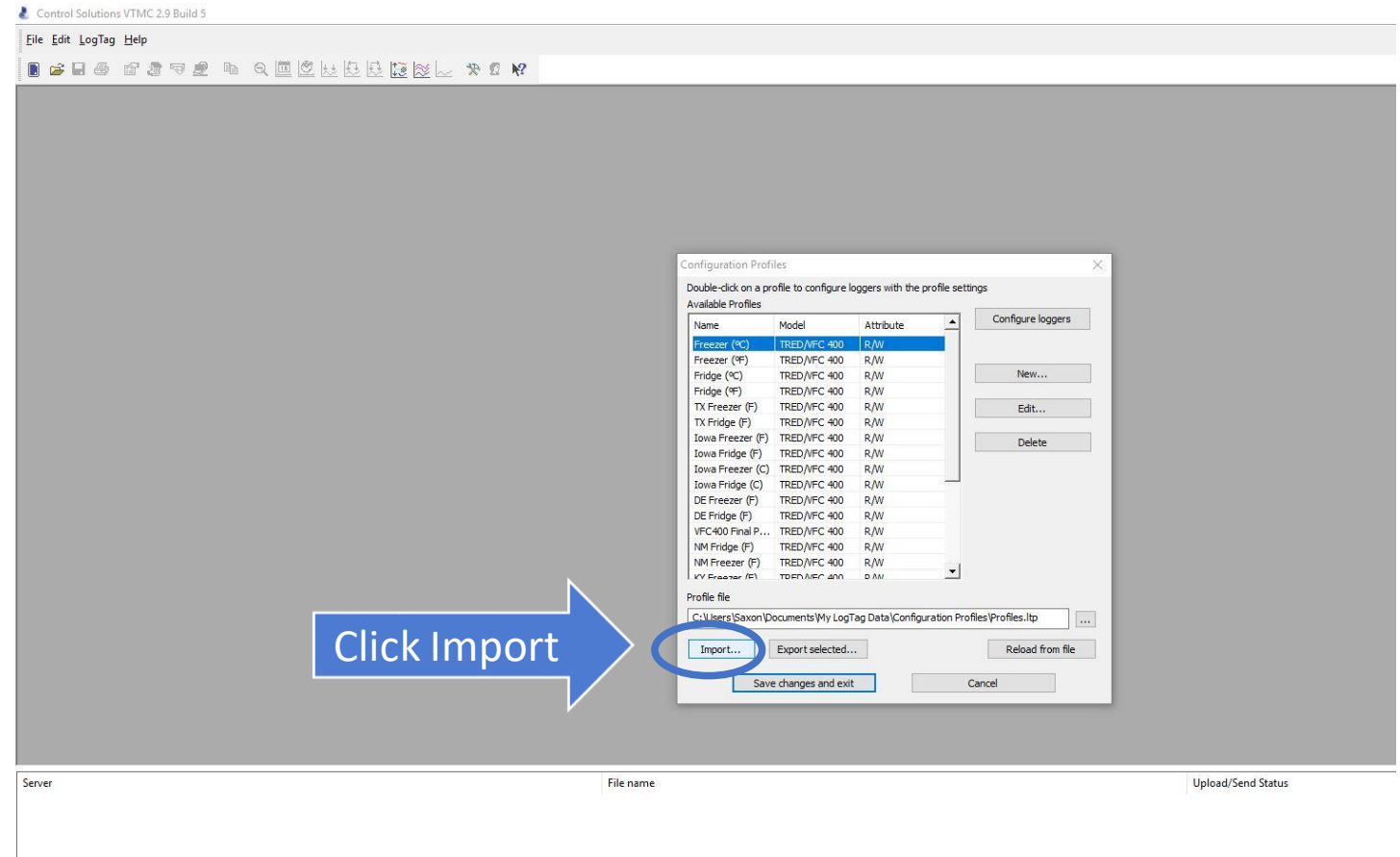
Click the “LogTag” menu button and navigate to Profiles.

Note: You can use the Function keys listed on the right of the menu as a shortcut if you would like.



Importing and flashing pre-configured profiles.

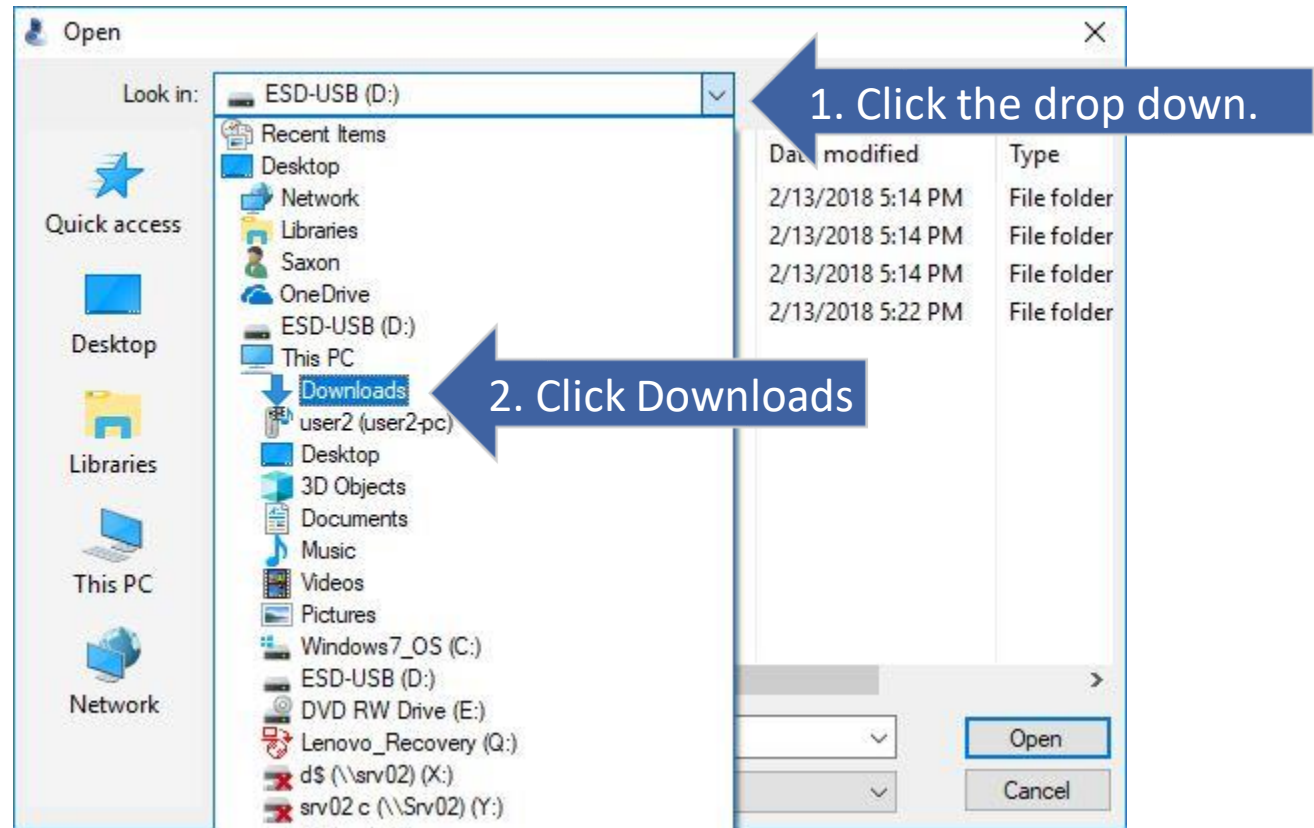
- The configuration profile manager should have opened up.
- Now we are going to click on import so we can locate and import the configuration profile we downloaded earlier.



Importing and flashing pre-configured profiles.

After clicking import, A file manger window will open.

1. Click the drop down arrow to open the menu.
2. Locate downloads.
3. Click on downloads.

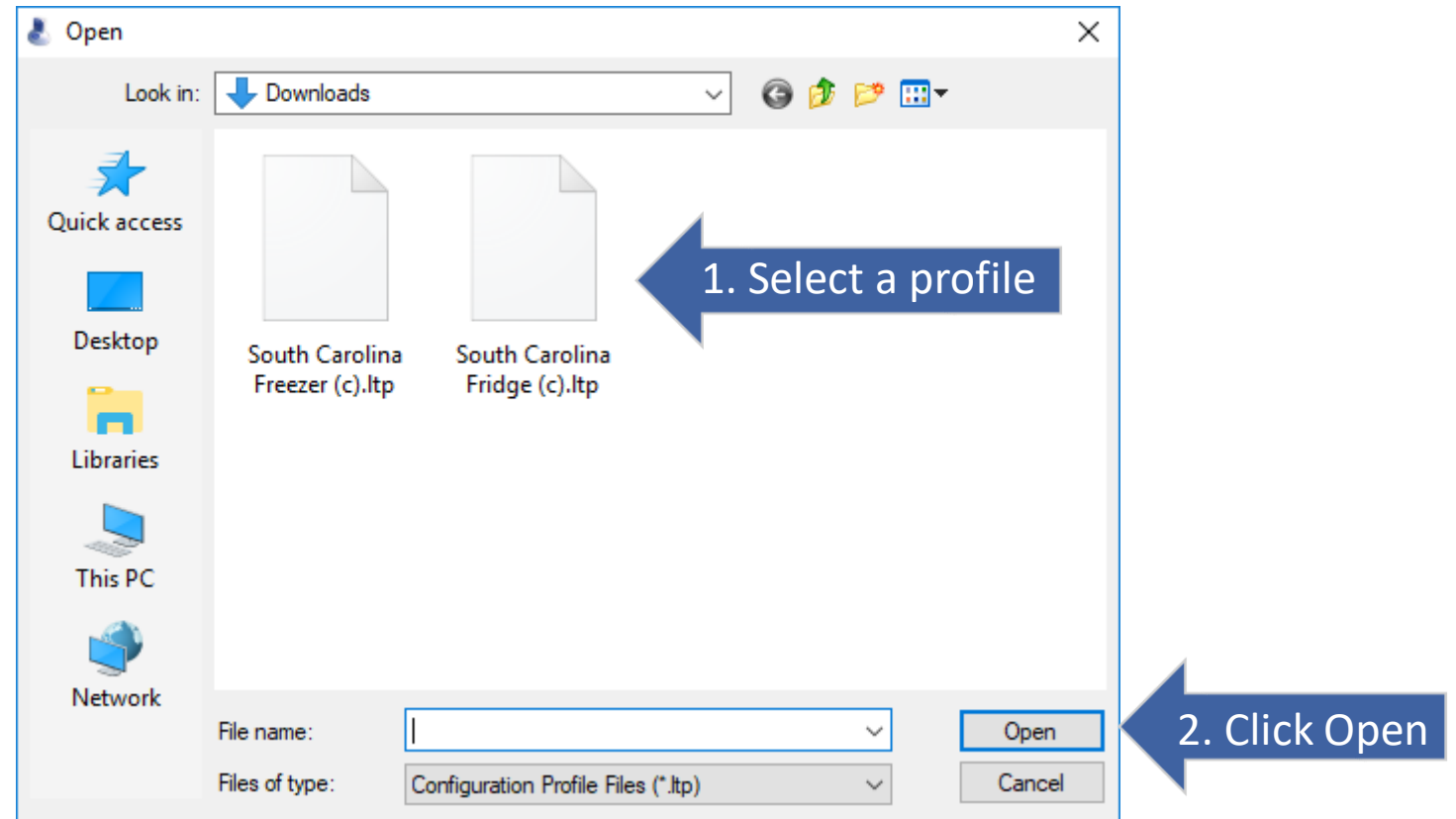


Importing and flashing pre-configured profiles.

Now that we are in our downloads folder:

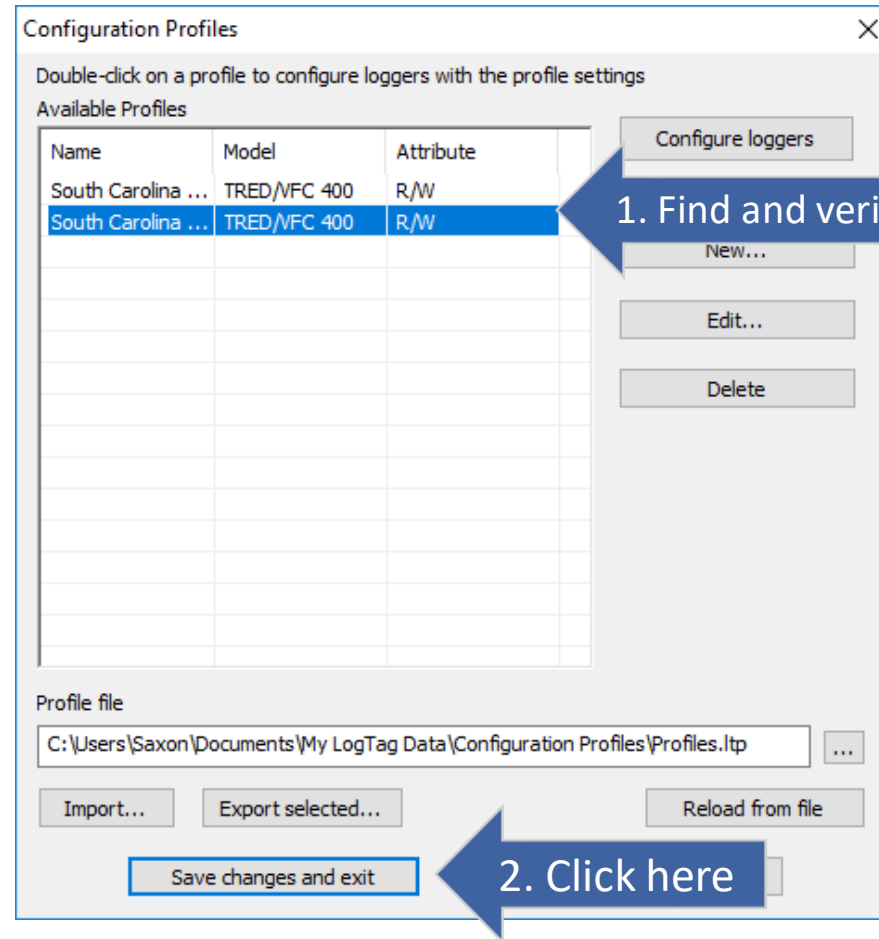
1. Locate and single click the profile you downloaded.
2. Click open.

Note: You can only import one profile at a time.



Importing and flashing pre-configured profiles.

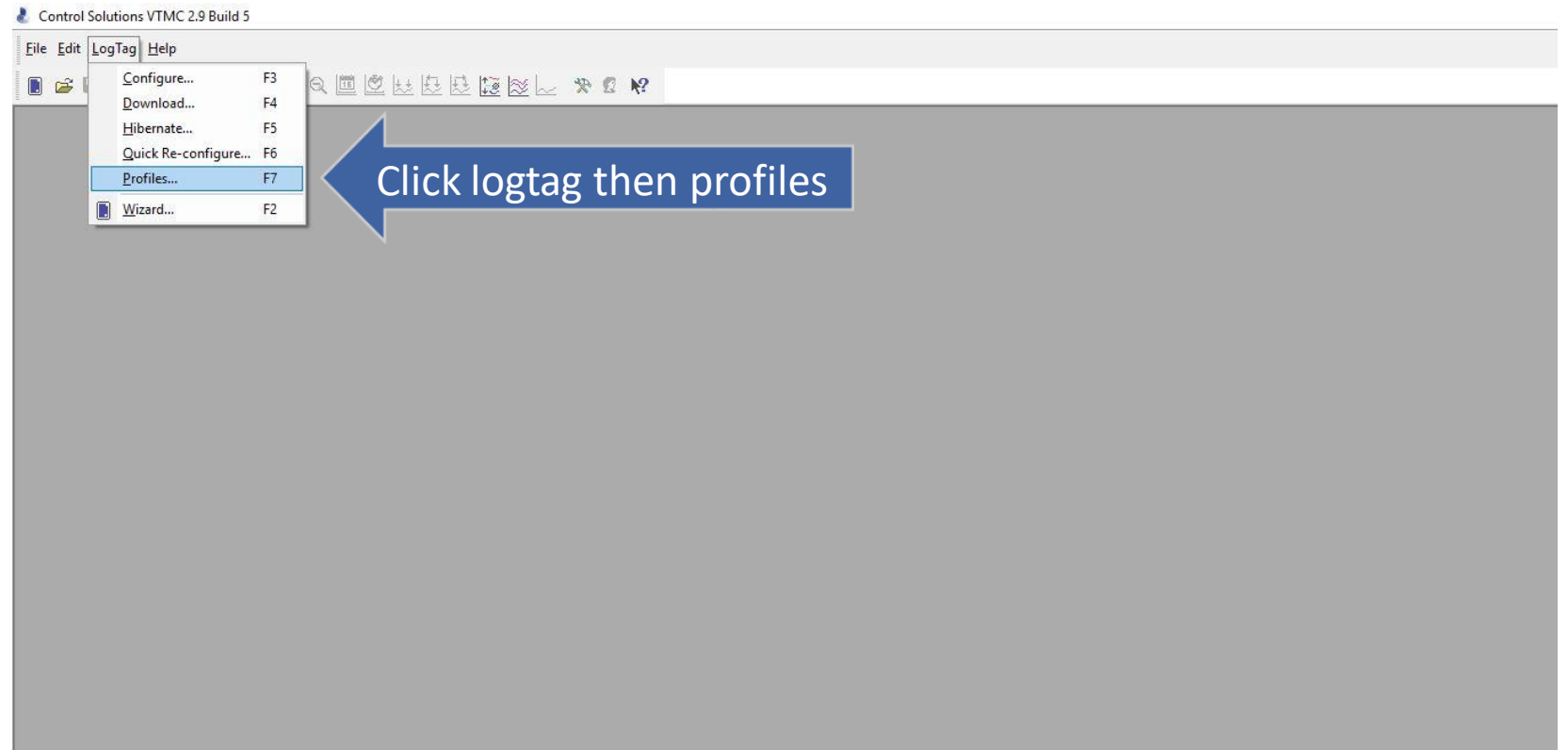
- Verify your profile imported.
- Save the imported profile settings.



Importing and flashing pre-configured profiles.

•After saving the new profile lets re-open our profile manager.

1. Click LogTag.
2. Click profiles.



Importing and flashing pre-configured profiles.

- Now we will flash our new profile onto our data logger.
- First, we make sure our docking station is plugged into the PC via USB port.
- Now we insert our data logger into the Docking Station firmly.

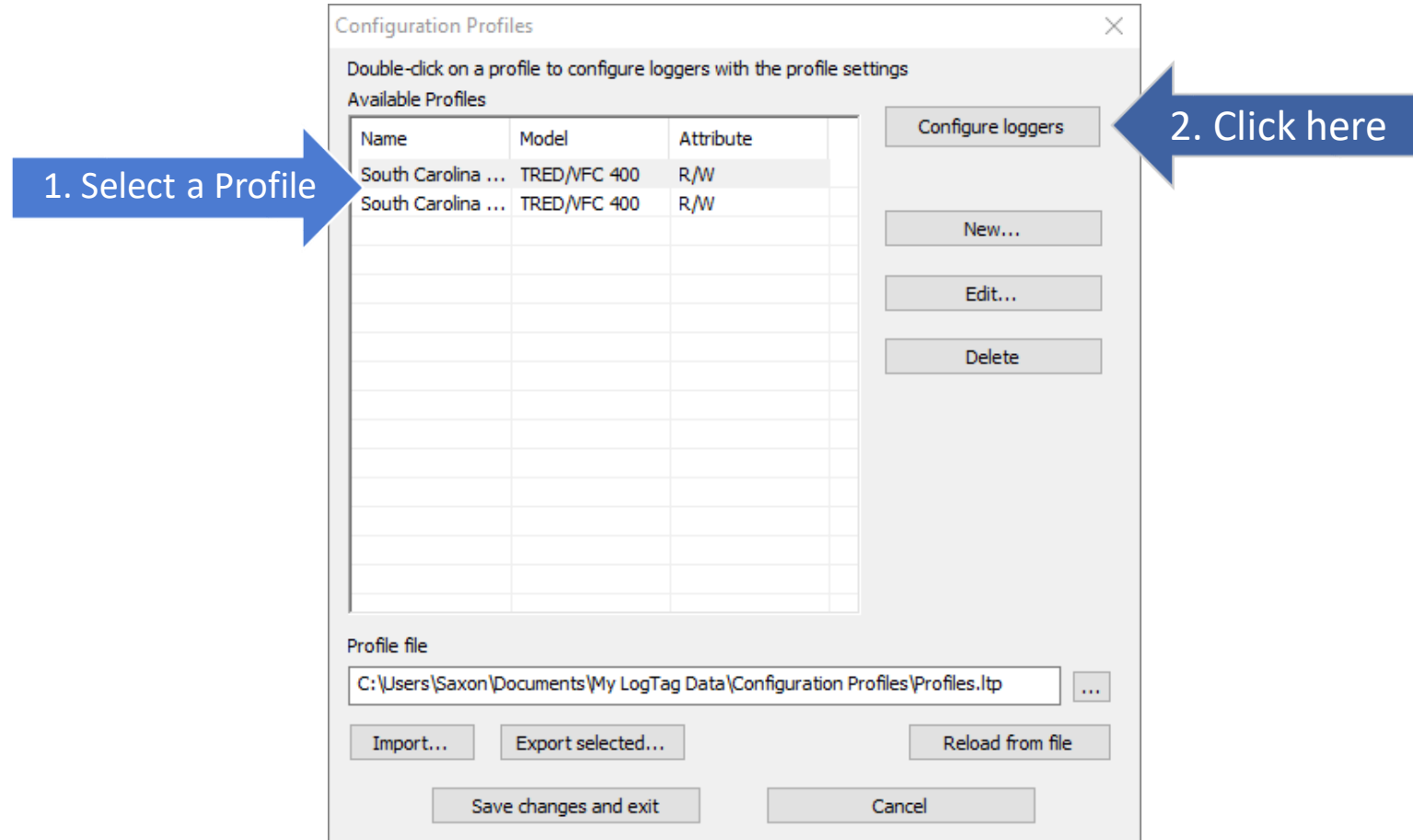


Importing and flashing pre-configured profiles.

- Now that we have made sure our data logger is in the docking station we can return to the profile manager we left open.

- To flash a new profile onto a device:

1. Select desired profile.
2. Click configure loggers.

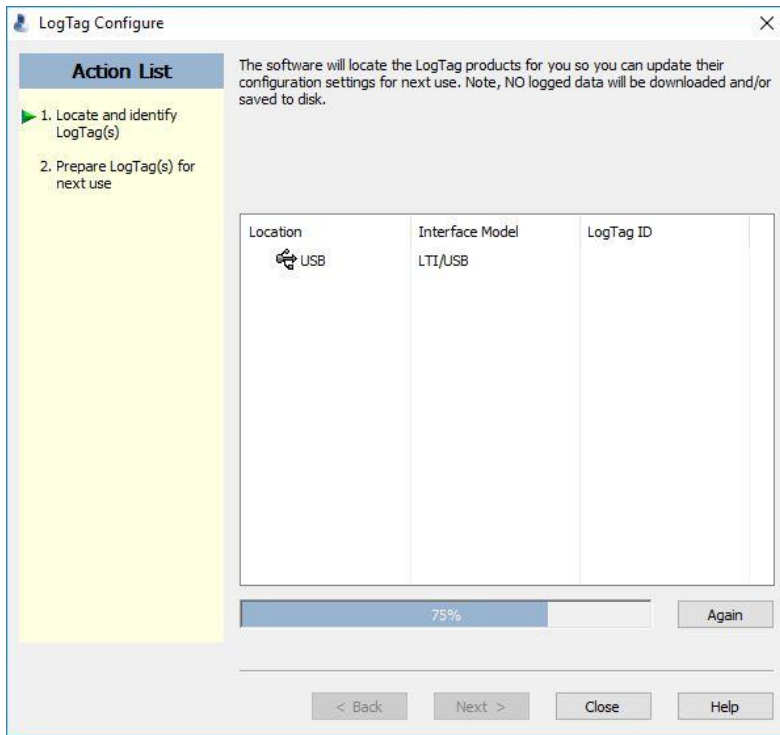


Importing and flashing pre-configured profiles.

The configuration flashing process is made up of three steps. Do not remove the logger if you see these.

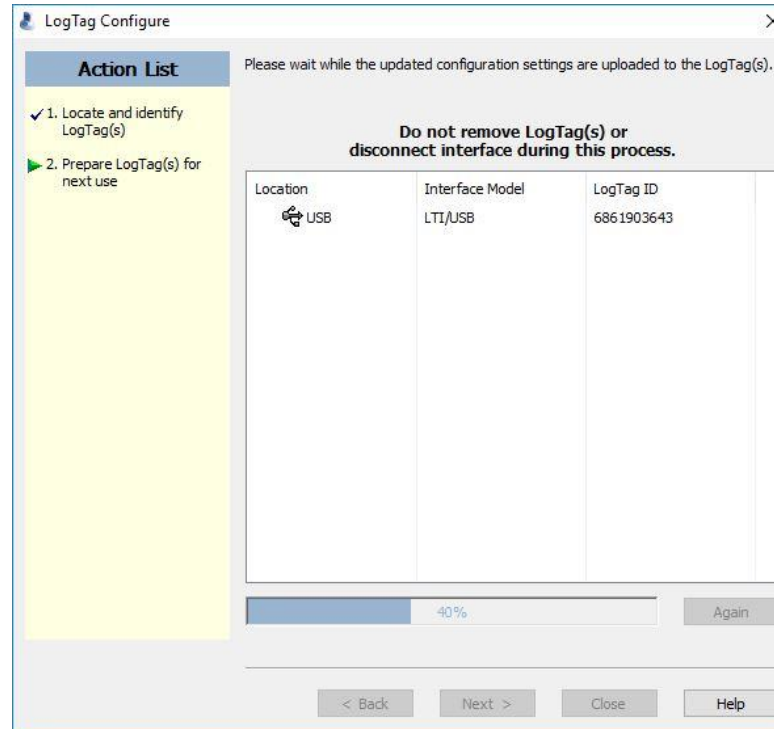
1. This is the detection step.

Here the software prepares the device.



2. This is the flash step.

The software is uploading the new settings to the device.



3. This is the final step.

“The logtag(s) below are now ready to start/be started” and the 100% loading bar indicates success. The device is now ready for use!

